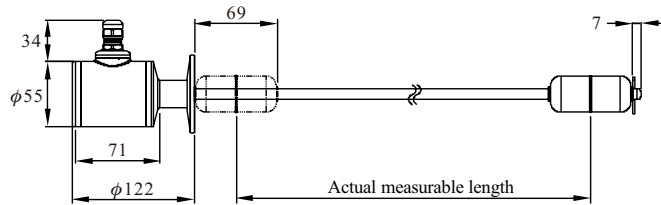


EGS15 Series Sanitary Type Magnetostrictive Level Transmitter Operation Manual

Installation:

1. Power supply is 12Vdc~30Vdc.
2. Sensor can be directly top mounted if the size of the connection hole is bigger than the diameter of the float. If the connection size is smaller float needs to be dismantled during mounting.
3. In case the diameter of the float is bigger than connection size, firstly dismantle float and mount. While installing back the float needs to be the right direction. Float have a mark showing correct direction to be mounted.
4. Magnetostrictive level transmitter is a sensor with high accuracy, so installation must be done special care. Bending of the probe can result in decreased accuracy or abnormal output.
5. It is not advised to change the float of the sensor. Other floats may lead to abnormal functioning of the sensor.
6. Avoid floats to hit any object or dropped. Mishandling of float may damage the magnet inside which may result in abnormal functioning of sensor.
7. Sensor must not be mishandled, squeezed, bended or deformed. In case of any deformation and abnormal functioning, sensor needs to be sent back to factory for repair & calibration.
8. During transportation, sensor must be covered with anti vibration packaging such as bubble packaging or spongy packaging etc.
9. Housing of the sensor must not be opened to avoid any damage or abnormal functioning.

Determine The Length During Ordering Instruction



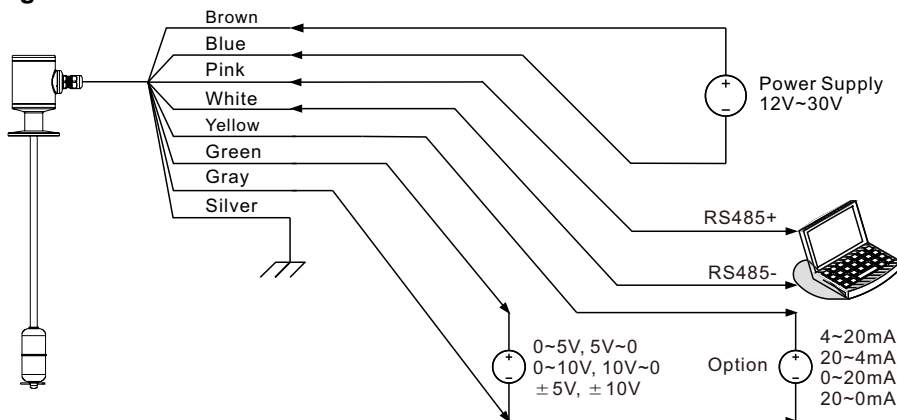
Please refer to the following for stem length and measuring range:

Stem length=measuring range+float length+7mm

Ex: 500mm(measuring range)+70mm(A1 float length)+7mm=577mm(stem length)

* The float size could be changed for different application.

Wiring Instruction:



Specification:

EGS15 Series		
Voltage Output	Type	0~10V/10~0V/0~5V/5~0V/±10V/±5V
	Loading Current	MAX 5mA
Current Output	Type	4~20mA /20~4mA/0~20mA /20~0mA
	Resistance	<500(Ohm)
Power Supply		12V~30V
Measuring Range		25mm~2500mm
Sampling Rate		500 times/sec.
Non-linearity (um)		25mm~500mm@±100um 501mm~2500mm@±0.02%F.S
Repeatability		±0.002%F.S
Hysteresis		±0.004%F.S
Communication		RS485
Ambient Temp.		-40~85°C
Operation Temp.		-40~125°C
Temperature Sensor		PT100(Optional)
IP Rating		IP67(Housing)/IP69K(Probe)

Warranty:

New Product Warranty

Our product warranty period is 12 month from the date of dispatch. During this period in case of any malfunction, company don't charge for testing, components and repair.

In case the product is defected or damaged during transportation, customers are advised to report matter with 7 days. Company will bear repair charges or replace defected product.

While sending back defected products for repair, please send back the complete set without any tearing. Send the defected product using appropriate safety packaging in order to avoid transportation damage.

Warranty will not be covered on the following condition:

1. After expiry of warranty period.
2. Not following operation manual or operation conditions such as using product over operation temperature or pressure etc.
3. Product damage due to natural disaster such as flood, fire, earthquake, lightening, typhoon etc.

Aplus Fine
http://www.aplusfine.com

Aplus Finetek Sensor, Inc.

California, U.S.

355 S. Lemon Ave, Suite D, Walnut, CA 91789; Tel : 1 909 598 2488

Illinois, U.S.

1741 Industrial Drive, Unit #3, Sterling, IL 61081; Tel : 815-632-3132

Email: info@aplusfine.com